

中国·焦作·修武产业聚集区

Head office: Xiuwu Industrial District, Jiaozuo, China

中国·郑州·荥阳五龙工业园区

Branch office: Wulong Industrial Park, Zhengzhou, China



中文官网



英文手机网

轮胎式

TYRE MOBILE CRUSHER STATION

移动破碎站

BAICHY 河南佰辰机械设备有限公司
佰辰重工 Henan Baichy Machinery Equipment Co., Ltd

国内销售部 Domestic Sales Department
电话 (TEL): 0371-86555711
传真 (FAX): 0371-86555123
网址 (WEB): www.baichy.com
邮箱 (EMAIL): hnbc@baichy.com

国际贸易部 International Trade Department
电话 (TEL): +86-371-86555722
传真 (FAX): +86-371-86555123
网址 (WEB): www.baichy.com
邮箱 (EMAIL): hnbc@baichy.com

TYRE MOBILE CRUSHER STATION



轮胎式移动破碎站经过优化及强化设计，强度更高，性能更优，结构更紧凑，在安装方面有较大的灵活性，特别适用于流动性强的工程，大大降低了基础及迁址费用，用户可根据加工原料的不同，采用不同配置的破碎站。

The tire type mobile crushing station has been optimized and strengthened in design, with higher strength, better performance, more compact structure, and greater flexibility in installation. It is particularly suitable for projects with strong fluidity, greatly reducing the cost of foundation and relocation. Users can use different configurations of crushing stations according to different processing materials.

APPLICATION AREA

应用领域

移动生产线广泛应用于石料厂、矿山、冶金、建材、公路、铁路、水利、化工等行业，主要用于各种石料的破碎、筛分、整形、制砂以及建筑垃圾的处理、经常移动的作业环境。

Mobile crushing plant is widely used in stone quarries, mines, metallurgy, construction materials, highways construction, railways, water conservancy, chemical industry and other relevant industrial fields, it is mainly used for crushing, screening, sand making and construction waste reproduction, especially meet the need of moving working site frequently.



APPLICATION FIELD

产品适用范围

适用一 建筑工地 Construction Site

轮胎移动破碎站可以将工地上的废弃建筑材料、混凝土和砖块破碎成再利用的骨料，用于后续的工程施工中。这样可以降低建筑废弃物的产生量，减少对自然资源的依赖，同时也节约了新材料的采购成本。

The tire mobile crushing station can crush waste construction materials, concrete, and bricks on the construction site into reused aggregates for subsequent construction. This can reduce the generation of construction waste, reduce dependence on natural resources, and also save the cost of purchasing new materials.



适用二 矿山和采石场 Mines and Quarries

轮胎移动破碎站可以将采石场或矿山中的原石破碎成适合采石和挖掘的块状物料，方便后续的加工和运输。它能有效提高采石场或矿山的生产效率，并减少人力成本和时间。

The tire mobile crushing station can crush the raw stones in the quarry or mine into block materials suitable for quarrying and excavation, which facilitates subsequent processing and transportation. It can effectively improve the production efficiency of quarry or mine and reduce labor costs and time.



适用三 城市基础设施建设 Urban Infrastructure Construction

在城市基础设施建设中，如道路修建、桥梁建设和隧道工程等，移动破碎站可以将挖掘出的大石块和混凝土块破碎成适合使用的骨料，然后再进行再利用或清理处理。这大大降低了废弃物的处理和运输成本，并节约了土地资源。

In urban infrastructure construction, such as road construction, bridge construction, and tunnel engineering, mobile crushing stations can crush excavated large rocks and concrete blocks into suitable aggregates for reuse or cleanup. This greatly reduces waste processing and transportation costs and saves land resources.



ADVANTAGES OF MOBILE CRUSHER

移动站的优势

优势一 可实现全车载皮带机生产线和外接皮带机生产线

It can work with trailer mounted belt conveyor or stationary belt conveyor

全车载皮带机生产线中所有部件完全车载，现场无需吊车和架设皮带机，配合可调固定式支腿设计，切实实现了无基础安装。可快速安装调试，转场时能实现24小时投入生产，真正意义上实现了移动站便捷、灵活的优越性。外接皮带机生产线投资成本低，适用不需要经常转场的客户。

All-vehicle belt conveyor crushing plant, all parts are completely vehicle-mounted, and there is no need for cranes and belt supports. With the adjustable landing leg, the foundation-free installation is practically realized. The installation and adjustment is convenient; it is able to start production with 24 hours after transition. Thus the advantages of convenience and flexibility of mobile stations come to realize. External stationary belt conveyor production line has low investment cost. It is suitable for customers who do not need frequent transitions.



优势二 移动站模块化设计，通用互换性强

Modular design of mobile station, strong unvrslait and neneangallt

可快速组装成所需移动站型号，缩短生产周期，满足客户快速交货需求。

It can be quickly assembled into the required mobile station model, thus shorten the production time and delivery time.



优势三 初碎车型标配自动脂润滑系统，中细碎车型标配车载稀油润滑系统，振动筛车型采用稀油自润滑方式

Automatic grease lubrication system is adopted in primary crushing models, vehicle-mounted thin oil lubrication system is adopted in secondary and tertiary crushing, vibrating screen is self-lubricated by thin oil.

有效节省人力成本，提高设备安全运行效率，保证连续生产。

Effectively save labor costs, Improve safe operation efficiency to ensure continuous production.



优势四 细节决定品质，超高性价比

Details determine quality, with high cost effective

初碎车型标配除铁器、给料机标配下挂防堵筛网、标配废料带且可现场左右互换安装、初碎和中细碎车型主皮带机标配聚氨酯和橡胶缓冲床、全系车型标配软启动及中央控制系统。

The primary crushing models adopt with iron remover. Anti-blocking screen is adopted under feeder. Side belt conveyor for waste, and they can be installed interchangeably from left to right on site. The main belt conveyor in primary and secondary crushing models adopts with polyurethane and rubber buffer bed. All of the models adopts with soft start and centralized control system.



TYRE JAW CRUSHER STATION

颞式轮胎移动破碎站

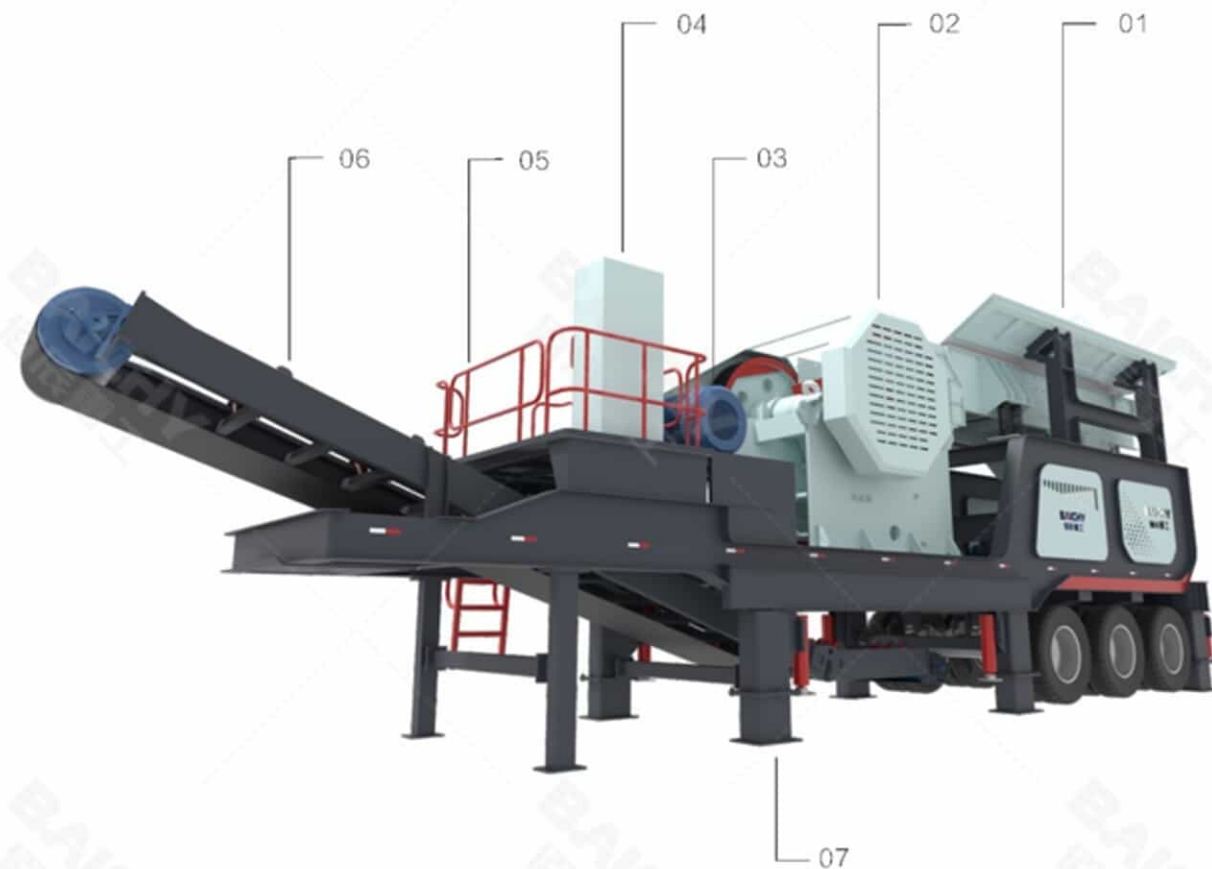


颞式轮胎移动破碎站是一种新的岩石破碎机，颞式破碎站大大拓展了粗碎作业概念领域。它的设计宗旨是站在客户的立场，把除掉破碎场地、环境带给客户破碎作业的障碍为解决方案，并为客户提供低投入的项目运营硬件设施。

The jaw mobile crushing station is a new type of rock crusher, which greatly expands the concept field of coarse crushing operations. Its design philosophy is to provide a solution according to crushing site and environment under client's requirement, while also providing customers with low investment project operation hardware facilities.

Tyre Jaw Crusher Station Structure

颞式轮胎移动破碎站结构



01	振动给料机	Vibrating Feeder
02	颞式破碎机	Jaw Crusher
03	电机	Motor
04	电控柜	Electric control cabinet
05	检修平台	Maintenance Platform
06	折叠皮带机	Folded Belt Conveyor
07	液压支腿	Hydraulic Leg

Technical Parameter

技术参数

移动车型号 Model	YDPZ57-8530	YDPZ80-8530	YDPZ69-9638	YDPZ96-9638	YDPZ75-1142	YDPZ106-1142	YDPZ116-1242	
振动给料机 Vibrating Feeder	ZSW8530	ZSW8530	ZSW9638	ZSW9638	ZSW1142	ZSW1142	ZSW1242	ZSW1242
颞式破碎机 Jaw Crusher	PE500×750	C80	PE600×900	CJ96	PE750×1060	CJ106	CJ116	CJ116
进料尺寸 Feeding Size (mm)	≤425	≤400	≤500	≤480	≤630	≤580	≤680	≤680
生产能力 Capacity (t/h)	40-130	50-160	90-180	60-160	110-380	150-300	200-400	200-400
电机功率 Power (kw)	45	55	55	75	110	110	160	160
带式输送机 Belt Conveyor	B650	B650	B800	B800	B1000	B1000	B1000	B1000
整机尺寸 Overall Size (mm)	10000×2300 ×4020	10000×2300 ×4020	11500×2300 ×4120	11600×2250 ×3710	12500×2550 ×4570	11600×2250 ×3710	13000×2550 ×4150	13000×2550 ×4150
适配二破移动车 Model	YDPZ1210-1548	YDPZ900-1548	YDPZ1214-1860	YDPZ160-1860	YDPZ1315-2160	YDPZ300-2160	YDPZ1320-2460	YDPZ400-2460
二级破碎机 Crusher	PF1210	PYB900	PFW1214	CS160	PFW1315	HP300	PFW1320	HP400
进料尺寸 Feeding Size (mm)	≤400	≤115	≤430	≤205	≤500	≤210	≤500	≤250
生产能力 Capacity (t/h)	70-130	15-90	100-180	109-349	130-220	110-380	160-350	180-560
电机功率 Power (kw)	90	55	132	160	200	220	250	280
振动筛 Vibrating Screen	3YK1548	3YK1548	3YK1860	3YK1860	3YK2160	3YK2160	3YK2460	3YK2460
带式输送机 Belt Conveyor	B650	B650	B800	B800	B1000	B1000	B1000	B1000
生产能力 Capacity (t/h)	40-100	60-100	80-150	80-150	130-250	130-250	200-280	240-320
整机尺寸 Overall Size (mm)	12500×2500 ×5600	12500×2500 ×5600	14500×2890 ×6600	14500×2890 ×6600	15500×2960 ×6850	15500×2960 ×6850	14500×2980 ×7170	16500×2960 ×7170

注：产品型号、参数、外观等不断改进，如有修改样品图片与实物存在差异，以实物为准。

Note: Product models, parameters, appearance, etc. are constantly being improved. If any modifications cause differences please refer to the actual product received.

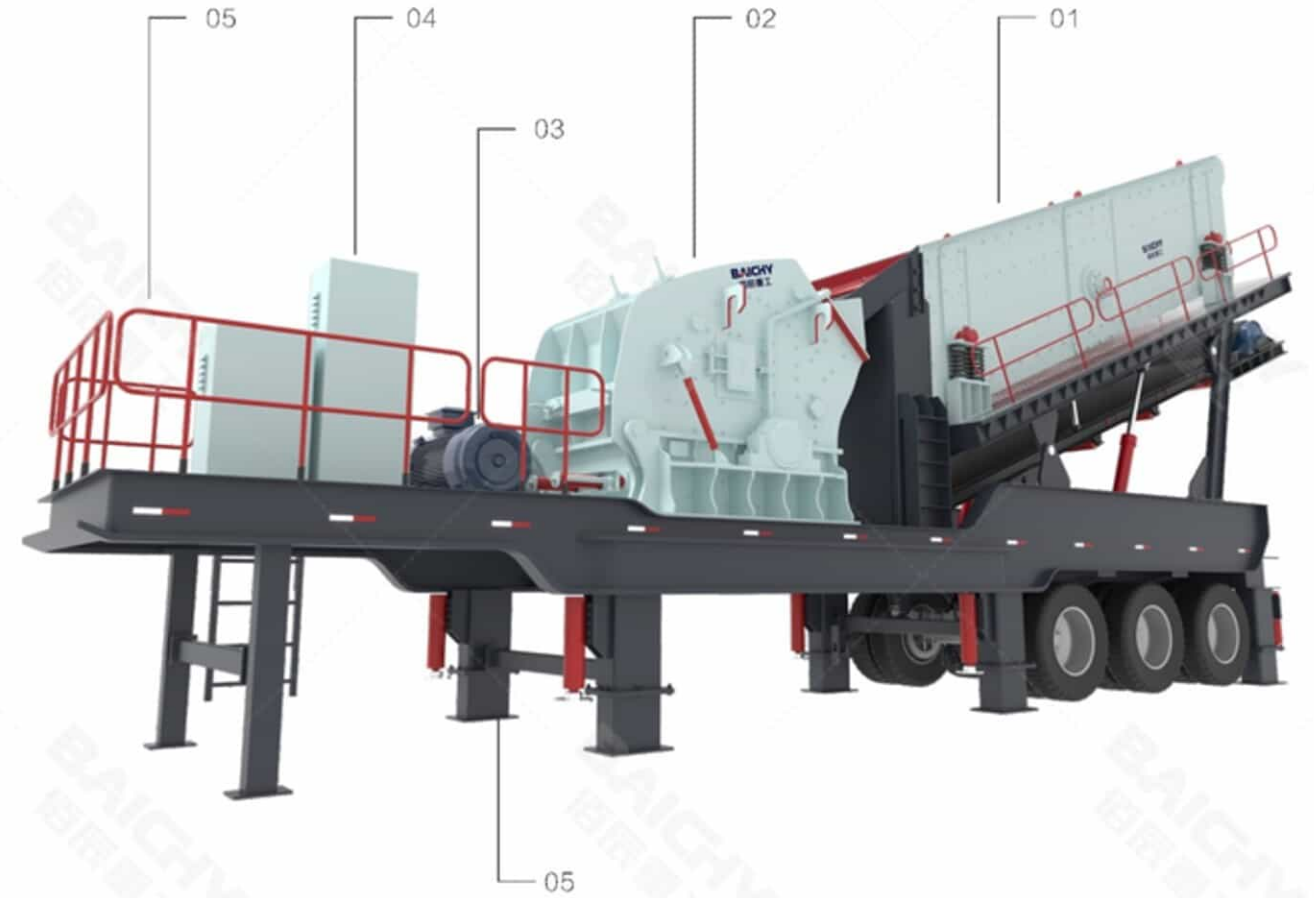


TYRE IMPACT CRUSHER STATION

反击式轮胎移动破碎站



Tyre Impact Crusher Station Structure
反击式轮胎移动破碎站结构



反击式轮胎移动破碎站选用优质高铬板锤、耐磨反击衬板。破碎比大，加上反击式破碎机自身成品粒形好的特点，使该套移动式破碎机组设备具有更广泛的使用范围。

The tyre mobile impact crushing station uses high-quality high-chromium blow hammers and wear-resistant impact linings. It has advantage of large crushing ratio and more cubic product shape, which make this type of mobile crushing equipment have a wider range of applications.

01	振动筛	Vibrating Screen
02	反击式破碎机	Impact Crusher
03	电机	Motor
04	电控柜	Electric control cabinet
05	检修平台	Maintenance Platform
06	液压支腿	Hydraulic Leg

Technical Parameter

技术参数

移动车型号 Model	YDPZ57-8530	YDPZ80-8530	YDPZ69-9638	YDPZ96-9638	YDPZ75-1142	YDPZ106-1142	YDPZ116-1242	
振动给料机 Vibrating Feeder	ZSW8530	ZSW8530	ZSW9638	ZSW9638	ZSW1142	ZSW1142	ZSW1242	ZSW1242
颞式破碎机 Jaw Crusher	PE500×750	C80	PE600×900	CJ96	PE750×1060	CJ106	CJ116	CJ116
进料尺寸 Feeding Size (mm)	≤425	≤400	≤500	≤480	≤630	≤580	≤680	≤680
生产能力 Capacity (t/h)	40-130	50-160	90-180	60-160	110-380	150-300	200-400	200-400
电机功率 Power (kw)	45	55	55	75	110	110	160	160
带式输送机 Belt Conveyor	B650	B650	B800	B800	B1000	B1000	B1000	B1000
整机尺寸 Overall Size (mm)	10000×2300 ×4020	10000×2300 ×4020	11500×2300 ×4120	11600×2250 ×3710	12500×2550 ×4570	11600×2250 ×3710	13000×2550 ×4150	13000×2550 ×4150
适配二级移动车 Model	YDPZ1210-1548	YDPZ900-1548	YDPZ1214-1860	YDPZ160-1860	YDPZ1315-2160	YDPZ300-2160	YDPZ1320-2460	YDPZ400-2460
二级破碎机 Crusher	PF1210	PYB900	PFW1214	CS160	PFW1315	HP300	PFW1320	HP400
进料尺寸 Feeding Size (mm)	≤400	≤115	≤430	≤205	≤500	≤210	≤500	≤250
生产能力 Capacity (t/h)	70-130	15-90	100-180	109-349	130-220	110-380	160-350	180-560
电机功率 Power (kw)	90	55	132	160	200	220	250	280
振动筛 Vibrating Screen	3YK1548	3YK1548	3YK1860	3YK1860	3YK2160	3YK2160	3YK2460	3YK2460
带式输送机 Belt Conveyor	B650	B650	B800	B800	B1000	B1000	B1000	B1000
生产能力 Capacity (t/h)	40-100	60-100	80-150	80-150	130-250	130-250	200-280	240-320
整机尺寸 Overall Size (mm)	12500×2500 ×5600	12500×2500 ×5600	14500×2890 ×6600	14500×2890 ×6600	15500×2960 ×6850	15500×2960 ×6850	14500×2980 ×7170	16500×2960 ×7170

注：产品型号、参数、外观等不断改进，如有修改样品图片与实物存在差异，以实物为准。

Note: Product models, parameters, appearance, etc. are constantly being improved. If any modifications cause differences please refer to the actual product received.



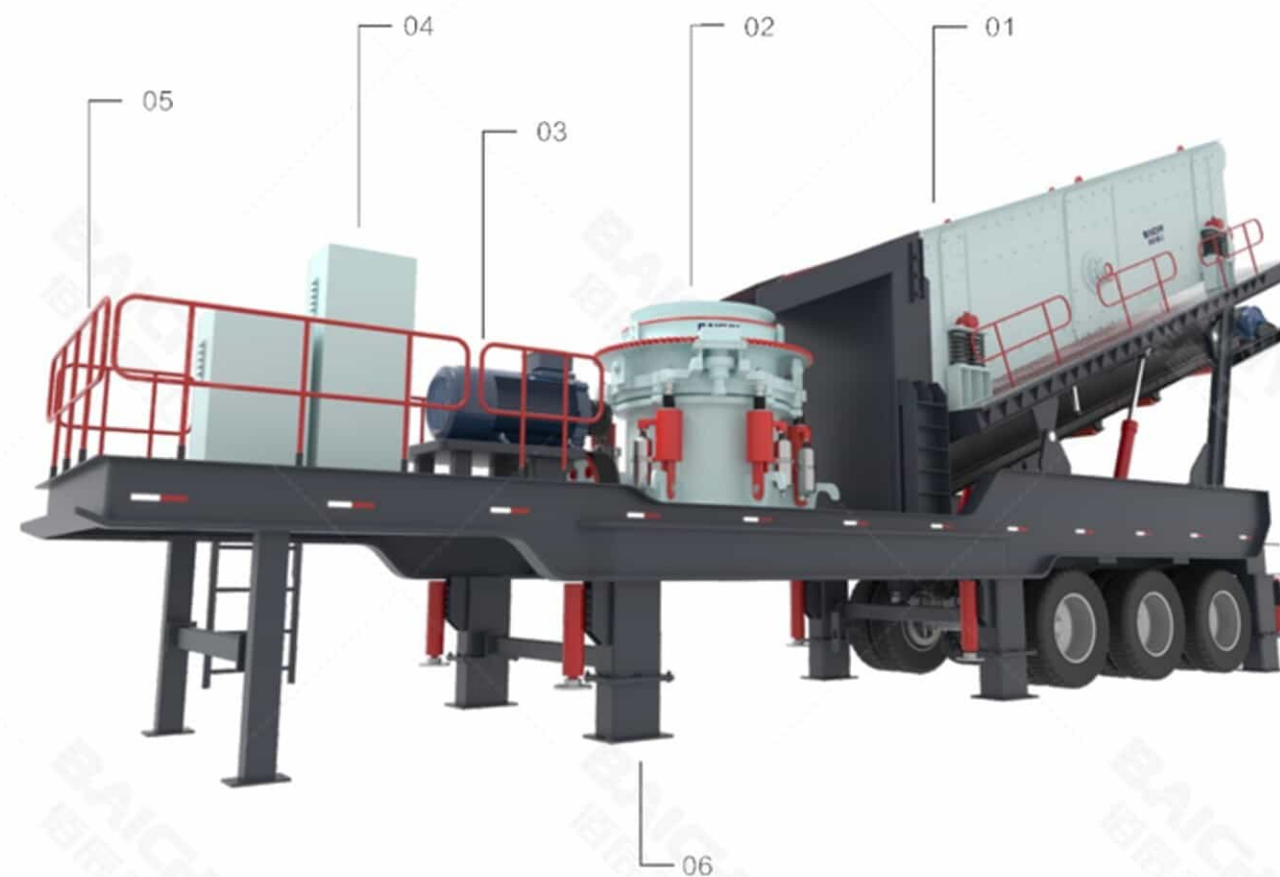
TYRE CONE CRUSHER STATION

圆锥式轮胎移动破碎站



Tyre Cone Crusher Station Structure

圆锥轮胎移动破碎站结构



01	振动筛	Vibrating Screen
02	圆锥破碎机	Cone Crusher
03	电机	Motor
04	电控柜	Electric control cabinet
05	检修平台	Maintenance Platform
06	液压支腿	Hydraulic Leg

圆锥式轮胎移动破碎站采用移动破碎技术，能够满足客户的移动破碎要求，主要用于高速公路、铁路、水电工程等流动性石料的作业。用户可根据加工原料的种类，规模和成品物料要求的不同采用多种配置形式。

The tyre mobile cone crushing station adopts mobile crushing technology and can meet the mobile crushing requirements of different customers. It is mainly used for mobile stone operations such as highways, railways, and hydropower projects. Users can adopt a variety of configurations according to the type, exploitation quantity and finished product material requirements of raw materials.

Technical Parameter

技术参数

移动车型号 Model	YDPZ57-8530	YDPZ80-8530	YDPZ69-9638	YDPZ96-9638	YDPZ75-1142	YDPZ106-1142	YDPZ116-1242	
振动给料机 Vibrating Feeder	ZSW8530	ZSW8530	ZSW9638	ZSW9638	ZSW1142	ZSW1142	ZSW1242	ZSW1242
颞式破碎机 Jaw Crusher	PE500×750	C80	PE600×900	CJ96	PE750×1060	CJ106	CJ116	CJ116
进料尺寸 Feeding Size (mm)	≤425	≤400	≤500	≤480	≤630	≤580	≤680	≤680
生产能力 Capacity (t/h)	40-130	50-160	90-180	60-160	110-380	150-300	200-400	200-400
电机功率 Power (kw)	45	55	55	75	110	110	160	160
带式输送机 Belt Conveyor	B650	B650	B800	B800	B1000	B1000	B1000	B1000
整机尺寸 Overall Size (mm)	10000×2300 ×4020	10000×2300 ×4020	11500×2300 ×4120	11600×2250 ×3710	12500×2550 ×4570	11600×2250 ×3710	13000×2550 ×4150	13000×2550 ×4150
选配二破移动车 Model	YDPZ1210-1548	YDPZ900-1548	YDPZ1214-1860	YDPZ160-1860	YDPZ1315-2160	YDPZ300-2160	YDPZ1320-2460	YDPZ400-2460
二级破碎机 Crusher	PF1210	PYB900	PFW1214	CS160	PFW1315	HP300	PFW1320	HP400
进料尺寸 Feeding Size (mm)	≤400	≤115	≤430	≤205	≤500	≤210	≤500	≤250
生产能力 Capacity (t/h)	70-130	15-90	100-180	109-349	130-220	110-380	160-350	180-560
电机功率 Power (kw)	90	55	132	160	200	220	250	280
振动筛 Vibrating Screen	3YK1548	3YK1548	3YK1860	3YK1860	3YK2160	3YK2160	3YK2460	3YK2460
带式输送机 Belt Conveyor	B650	B650	B800	B800	B1000	B1000	B1000	B1000
生产能力 Capacity (t/h)	40-100	60-100	80-150	80-150	130-250	130-250	200-280	240-320
整机尺寸 Overall Size (mm)	12500×2500 ×5600	12500×2500 ×5600	14500×2890 ×6600	14500×2890 ×6600	15500×2960 ×6850	15500×2960 ×6850	14500×2980 ×7170	16500×2960 ×7170

注：产品型号、参数、外观等不断改进，如有修改样品图片与实物存在差异，以实物为准。

Note: Product models, parameters, appearance, etc. are constantly being improved. If any modifications cause differences please refer to the actual product received.

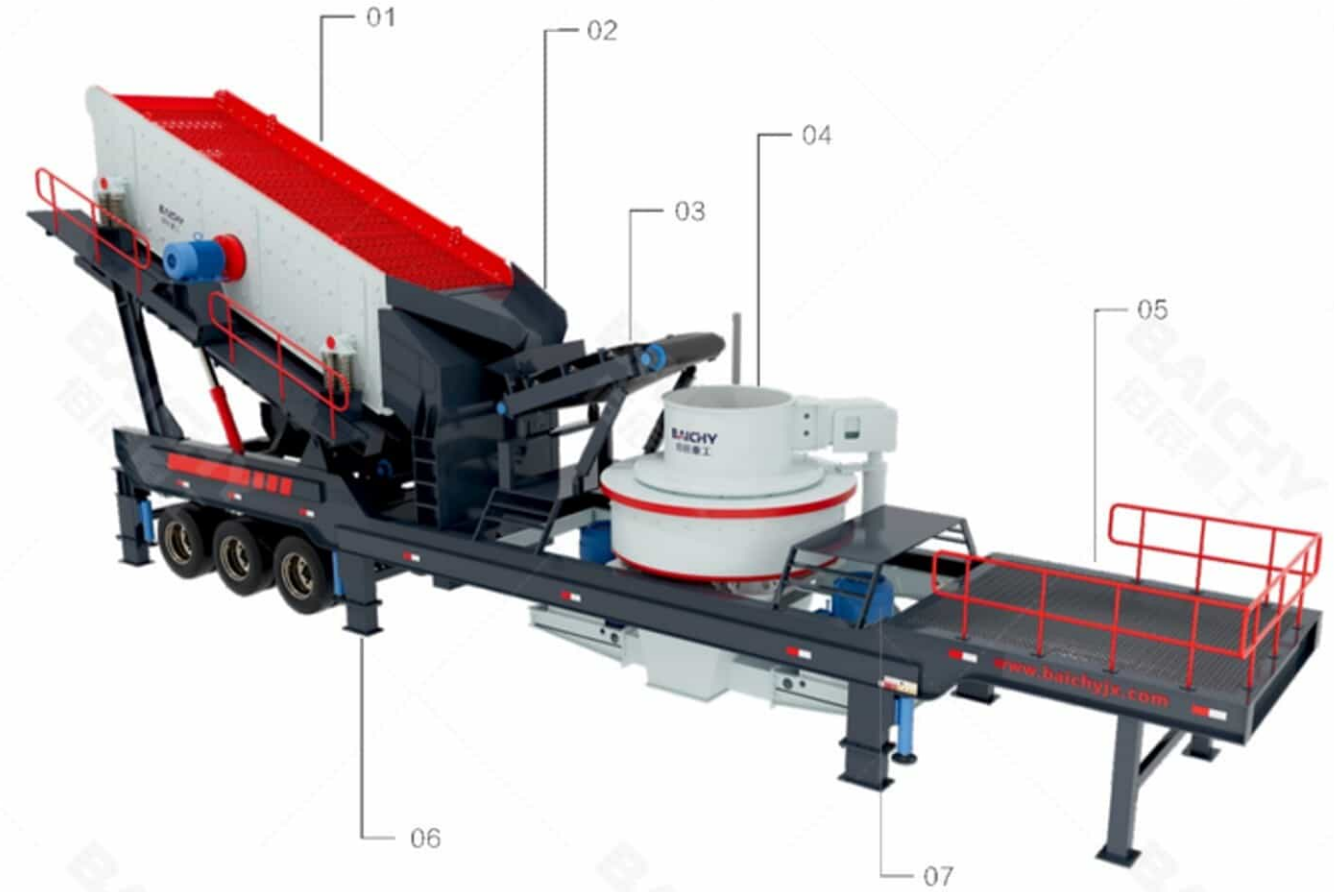


TYRE SAND MACHINE CRUSHER STATION

制砂机轮胎移动破碎站



Tyre Sand Machine Crusher Station Structure
制砂机轮胎移动破碎站结构



01	振动筛	Vibrating Screen
02	给料机	Vibrating Feeder
03	皮带机	Belt Conveyor
04	制砂机	Sand making Machine
05	检修平台	Maintenance Platform
06	液压支腿	Hydraulic Leg
07	电机	Motor

轮胎移动制砂机，也叫立轴冲击式移动破碎机，配备高性能冲击式破碎机（VSI制砂机）及车载式给料机和高强度振动筛，长度短、重量轻、机动性强、适应性强，降低物料运输费用。组合灵活，无论粗碎、细碎还是制砂作业，都能给您带来意想不到的效果。

Tyre mobile sand making machine, also called vertical shaft impact mobile crusher. It is equipped with a high-performance impact crusher (VSI sand making machine), truck-mounted vibrating feeder and high-strength vibrating screen. Short length, light weight and strong adaptability will reduce material transportation costs. Flexible combination - no matter it is coarse crushing, fine crushing or sand making operations, it can bring you excellent performance and results.

Technical Parameter

技术参数

移动车型号 Model	YDPZ7615-1848	YDPZ8522-1860	YDPZ9532-2160	YDPZ1145-2460	YDPZ1150-2460
制砂机 Sand Making Machine	5X7615	5X8522	5X9532	5X1145	5X1150
进料尺寸 Feeding Size (mm)	<35-40	<40-45	<45-50	<45-50	<45-55
生产能力 Capacity (t/h)	70-280	120-380	180-450	250-520	344-642
电机功率 Power (kw)	2×75	2×110	2×160	2×220	2×250
振动筛 Vibrating Screen	2/3/4YK1848	2/3/4YK1860	2/3/4YK2160	2/3/4YK2460	2/3/4YK2460
带式输送机 Belt Conveyor	B800	B800	B800	B1000	B1000
生产能力 Capacity (t/h)	70-280	120-380	180-450	250-520	344-642
整机尺寸 Overall Size (mm)	13000×2580×6430	13500×2580×6550	14300×2960×6550	14500×2960×6780	14500×2960×6780

注：产品型号、参数、外观等不断改进，如有修改样品图片与实物存在差异，以实物为准。

Note: Product models, parameters, appearance, etc. are constantly being improved. If any modifications cause differences please refer to the actual product received.



TYRE HAMMER CRUSHER STATION

重锤轮胎移动破碎站



Tyre Hammer Crusher Station Structure
重锤轮胎移动破碎站结构



重锤式移动破碎站采用新颖的机械制造技术将不同型号的重锤破安装在车架上。基于重锤破的一次成型的破碎能力，无需进行二级破碎整形过程，可降低客户投资成本，实现效率高作业。整机在轮胎的驱动下可灵活移动，集节能环保、结实耐用、破碎力强等众多优势于一身。

The heavy hammer mobile crushing station uses unique mechanical manufacturing technology to install different model of heavy hammer crushers on the mobile trailer frame. Based on special crushing cavity design of the heavy hammer crusher, no need for secondary crushing and shaping process, which can reduce customer investment costs and achieve high efficient work. The whole machine can move flexibly driven by the tires, and integrates many advantages such as energy saving, environmental protection, durability, and strong crushing power.

01	振动筛	Vibrating Screen
02	给料机	Vibrating Feeder
03	皮带机	Belt Conveyor
04	重锤破碎机	Heavy hammer crusher
05	振动给料机	Vibrating Feeder
06	电机	Motor
07	液压支腿	Hydraulic Leg

Technical Parameter

技术参数

移动车型号 Model	YDPZ1308-1548	YDPZ1110-1548	YDPZ1310-1848	YDPZ1512-2160	YDPZ1213-2160	YDPZ1315-2160
振动给料机 Vibrating Feeder	ZSW8530	ZSW8530	ZSW8530	ZSW9638	ZSW9638	ZSW1142
破碎机 Crusher	PCZ1308	CI1110	PCZ1310	PCZ1512	CI1213	CI1315
进料尺寸 Feeding Size (mm)	≤600	≤250	≤600	≤750	≤300	≤300
生产能力 Capacity (t/h)	100-160	60-210	120-180	225-350	80-280	100-350
电机功率 Power (kw)	2×55	160	2×75	2×160	250	250
振动筛 Vibrating Screen	2/3/4YK1548	2/3/4YK1548	2/3/4YK1848	2/3/4YK2160	2/3/4YK2160	2/3/4YK2160
带式输送机 Belt Conveyor	B650	B650	B800	B1000	B1000	B1000
生产能力 Capacity (t/h)	100-160	60-210	120-180	225-350	80-280	100-350
整机尺寸 Overall Size (mm)	11900×2250×6150	15350×2580×6980	11900×2580×6150	15300×2900×6980	14500×2900×6980	15600×2900×6980

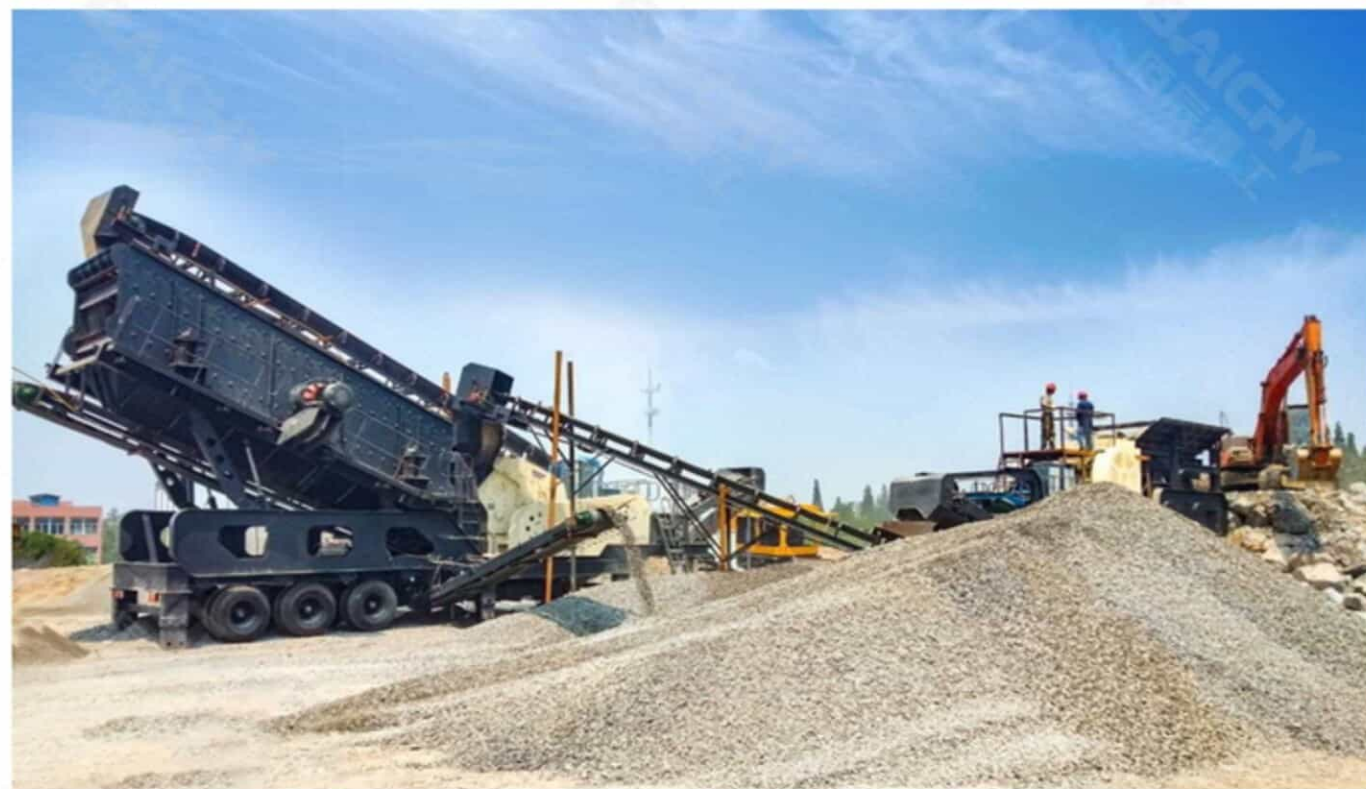
注：产品型号、参数、外观等不断改进，如有修改样品图片与实物存在差异，以实物为准。

Note: Product models, parameters, appearance, etc. are constantly being improved. If any modifications cause differences please refer to the actual product received.



TYRE TYPE MULTIPLE COMBINATION

轮胎式多机组合



MOBILE CRUSHING PLANT CONFIGURATION SOLUTION

移动生产线选型表

Flexible Portable Crushing Plant 简易轮胎移动站

该小型柔性移动式破碎装置的能力为30-60t/h，主要用于成本投资较少的小型矿山破碎系统。这种便携式破碎机用于处理各种岩石、混凝土和其他坚硬的石头。在移动式破碎机设备中，它被视为进料和破碎的结合。

The capacity of this flexible portable crushing plant is 30-60t/h, which is mainly used in small mine crushing systems with less cost investment. This portable crusher is used to handle all kinds of rock, concrete, and other hard stone. It is regarded as a combination of feeding and crushing in mobile crusher equipment.



Technical Parameter

技术参数

容量 Capacity (t/h)	10-20	30-60
振动给料机 Vibrating feeder	GZ40-4	ZSW6520
进料口尺寸 Feeding port size (mm)	400X1000	650X2500
最大进料尺寸 Max feeding size (mm)	350	560
电动机功率 Motor power (kw)	2X0.25	2X1.1
颚式破碎机 Jaw crusher	PE250X400	PE400X600
进料口 Feeding port (mm)	250X400	400X600
最大进料尺寸 Max feeding size (mm)	210	350
排料口范围 Discharge port range (mm)	25-60	40-90
电机功率 Motor power (kw)	15	30
产量 Capacity (t/h)	10-20	30-60
皮带机 Belt conveyor	B500	B500
宽度 Width (mm)	500	500
长度 Length (mm)	6000	6000
电机功率 Motor power (kw)	4	4
电力系统 Power system	按作业要求的电气控制或发电机组 Electrical control or generator set according to job requirements	
底盘 Chassis	2桥+手动千斤顶系统 2 axles + Manual jack system	

注：产品型号、参数、外观等不断改进，如有修改样品图片与实物存在差异，以实物为准。

Note: Product models, parameters, appearance, etc. are constantly being improved. If any modifications cause differences please refer to the actual product received.

Multi-combination mobile crushing plant 1

多组合移动式破碎站 1

对于中小型生产要求频繁移动的操作环境以及独立完成客户对石材生产的需求，多机组合移动破碎站是最佳选择。根据破碎水平的不同要求（粗碎、中碎、细碎），一个破碎厂可选择不同的机型，主要由振动给料机、颚式破碎机、圆锥破碎机/冲击破碎机、振动筛、皮带机等组成。

For small and medium production requirements, frequent moving operating environments, and independent completion of customer needs for stone production, a multi-stage combination mobile crushing station is the best choice. Based on the various request for the crushing level, (coarse crushing, medium crushing, and fine crushing), different machine model is chosen to be equipped on one crushing plant, but mainly composed of a vibrating feeder, jaw crusher, cone crusher / impact crusher, vibrating screen, belt conveyor and etc.



颚式移动破碎站 + 圆锥式移动破碎站
Mobile jaw and cone crusher plant



颚式移动破碎站 + 反击式移动破碎站
Mobile jaw and cone crusher plant

Technical Parameter

技术参数

移动车型号 Model	YDPZ57-8530	YDPZ80-8530	YDPZ69-9638	YDPZ96-9638	YDPZ75-1142	YDPZ106-1142	YDPZ116-1242	
振动给料机 Vibrating Feeder	ZSW8530	ZSW8530	ZSW9638	ZSW9638	ZSW1142	ZSW1142	ZSW1242	ZSW1242
颚式破碎机 Jaw Crusher	PE500×750	C80	PE600×900	CJ96	PE750×1060	CJ106	CJ116	CJ116
进料尺寸 Feeding Size (mm)	≤425	≤400	≤500	≤480	≤630	≤580	≤680	≤680
生产能力 Capacity (t/h)	40-130	50-160	90-180	60-160	110-380	150-300	200-400	200-400
电机功率 Power (kw)	45	55	55	75	110	110	160	160
带式输送机 Belt Conveyor	B650	B650	B800	B800	B1000	B1000	B1000	B1000
整机尺寸 Overall Size (mm)	10000×2300 ×4020	10000×2300 ×4020	11500×2300 ×4120	11600×2250 ×3710	12500×2550 ×4570	11600×2250 ×3710	13000×2550 ×4150	13000×2550 ×4150
适配二破移动车 Model	YDPZ1210-1548	YDPZ900-1548	YDPZ1214-1860	YDPZ160-1860	YDPZ1315-2160	YDPZ300-2160	YDPZ1320-2460	YDPZ400-2460
二级破碎机 Crusher	PF1210	PYB900	PFW1214	CS160	PFW1315	HP300	PFW1320	HP400
进料尺寸 Feeding Size (mm)	≤400	≤115	≤430	≤205	≤500	≤210	≤500	≤250
生产能力 Capacity (t/h)	70-130	15-90	100-180	109-349	130-220	110-380	160-350	180-560
电机功率 Power (kw)	90	55	132	160	200	220	250	280
振动筛 Vibrating Screen	3YK1548	3YK1548	3YK1860	3YK1860	3YK2160	3YK2160	3YK2460	3YK2460
带式输送机 Belt Conveyor	B650	B650	B800	B800	B1000	B1000	B1000	B1000
生产能力 Capacity (t/h)	40-100	60-100	80-150	80-150	130-250	130-250	200-280	240-320
整机尺寸 Overall Size (mm)	12500×2500 ×5600	12500×2500 ×5600	14500×2890 ×6600	14500×2890 ×6600	15500×2960 ×6850	15500×2960 ×6850	14500×2980 ×7170	16500×2960 ×7170

注：产品型号、参数、外观等不断改进，如有修改样品图片与实物存在差异，以实物为准。

Note: Product models, parameters, appearance, etc. are constantly being improved. If any modifications cause differences please refer to the actual product received.

"four in one" multiple combination mobile crushing plant 2

“一体式”组合式移动站 2

对于中小型生产要求频繁移动的操作环境以及独立完成客户对石材生产的需求，多级组合移动破碎站是最佳选择。主要由振动给料机、颚式破碎机、圆锥破碎机、冲击破碎机、振动筛等组成，可根据粗碎、中碎、细碎的不同类型而不同。

For small and medium production requirements, frequent moving operating environments, and independent completion of customer needs for stone production, a multi-stage combination mobile crushing station is the best choice. It is mainly composed of a vibrating feeder, jaw crusher, cone crusher, impact crusher, vibrating screen, etc. according to different types of coarse crushing, medium crushing, and fine crushing.



Technical Parameter

技术参数

移动车型号 Model	YDPZ46-1007	YDPZ46-900	YDPZ57-1210	YDPZ57-75	YDPZ96-1214	YDPZ96-160
振动给料机 Vibrating Feeder	ZSW0625	ZSW0625	ZSW8530	ZSW8530	ZSW9638	ZSW9638
颚式破碎机 Jaw Crusher	PE400×600	PE400×600	PE500×750	PE500×750	CJ96	CJ96
进料尺寸 Feeding Size(mm)	≤350	≤350	≤425	≤425	≤480	≤480
生产能力 Capacity (t/h)	15-60	15-60	40-130	40-130	60-160	60-160
破碎机 Crusher	PF1007	PY8900	PF1210	CS75	PFW1214	CS160
进料尺寸 Feeding Size (mm)	≤250	≤115	≤400	≤150	≤430	≤205
生产能力 Capacity (t/h)	15-60	15-90	70-130	27-163	100-180	109-349
振动筛 Vibrating Screen	2/3/4YK1237	2/3/4YK1237	2/3/4YK1848	2/3/4YK1848	2/3/4YK1860	2/3/4YK1860
带式输送机 Belt Conveyor	B650	B650	B650	B650	B800	B800
生产能力 Capacity (t/h)	15-60	15-60	70-130	27-130	60-160	60-160
整机尺寸 Overall Size (mm)	11500×2050×5400		15800×2200×5850		18000×2700×7650	

注：产品型号、参数、外观等不断改进，如有修改样品图片与实物存在差异，以实物为准。

Note: Product models, parameters, appearance, etc. are constantly being improved. If any modifications cause differences please refer to the actual product received.



INTRODUCTION TO PRODUCTION LINE APPLICATIONS

生产线应用简介

Configuration 1 组合 1

三段两闭路破碎和筛分, 4或5种成品

Primary crushing plant+ Secondary crushing plant with screening unit +Screening plant,4 or 5 kinds of output.



Configuration 2 组合 2

两段一闭路破碎和筛分, 3或4种成品

Primary crushing plant+ Secondary crushing plant with screening unit +Screening plant, 3 or 4 kinds of output.



Configuration 3 组合 3

两段一闭路破碎和筛分, 3或4种成品

Primary crushing plant+ Secondary crushing plant with screening unit , 3 or 4 kinds of outputs.



PROJECT CASE

工程案例

